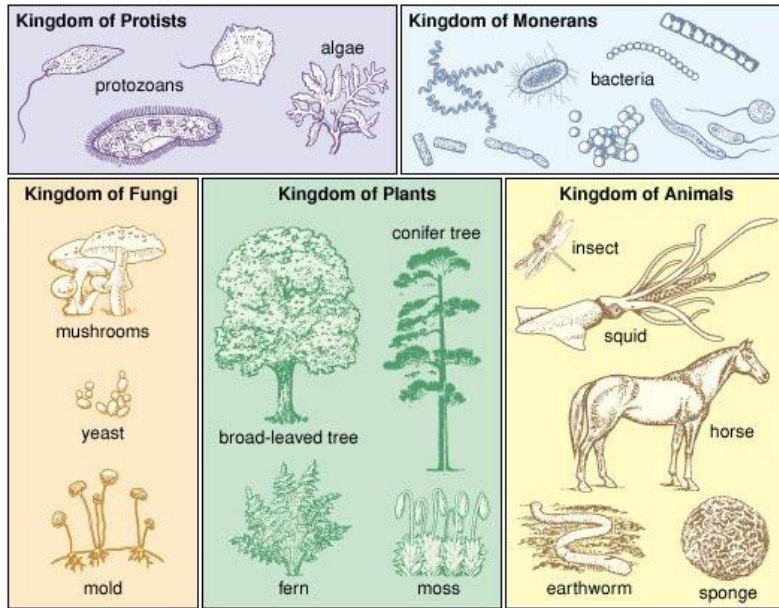


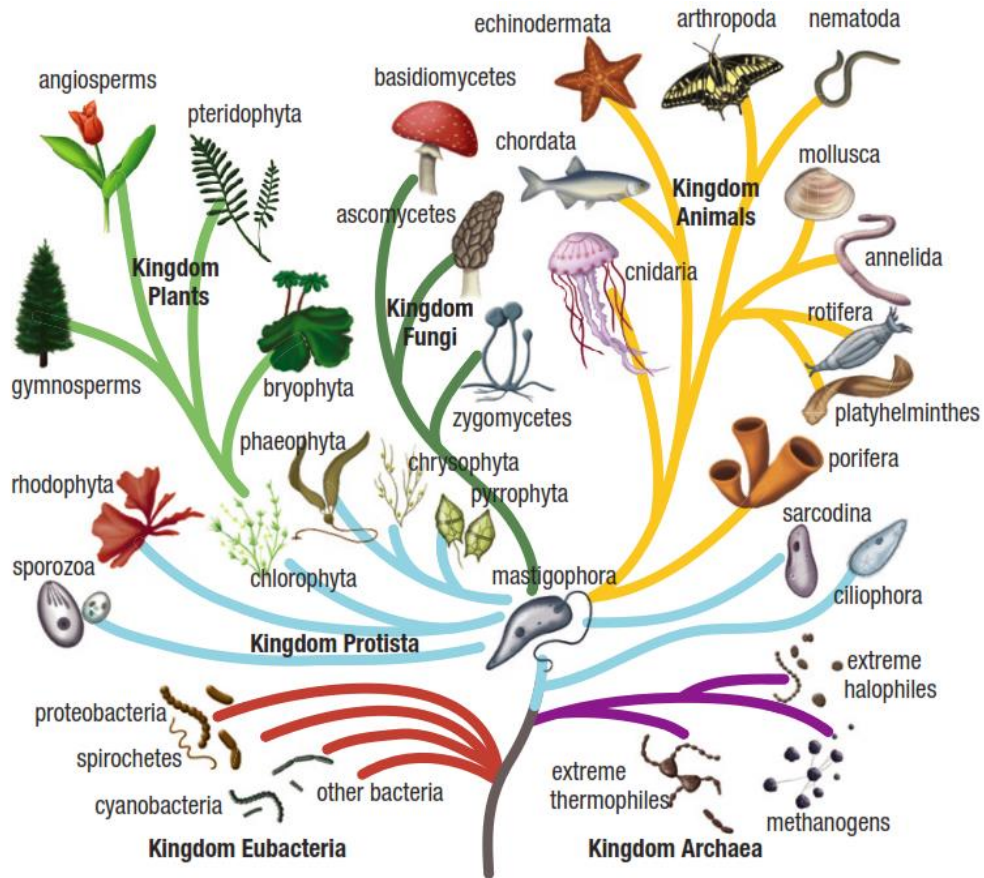
# Kingdoms and Domains

The traditional taxonomic system identified 5 distinct kingdoms of life:



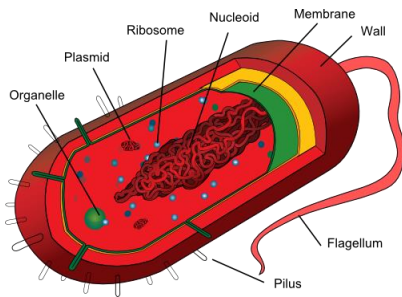
© 2006 Encyclopædia Britannica, Inc.

Phylogenetics broadened our understanding and ultimately broke up the Kingdom Monera into two distinct kingdoms known as Eubacteria and Archaea.

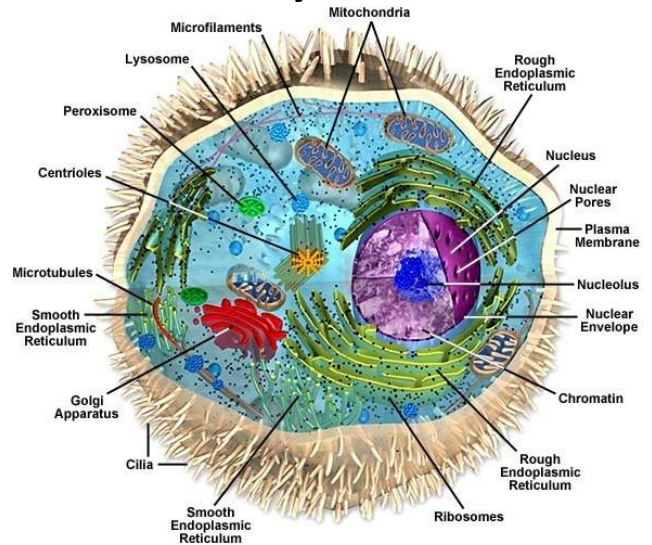


Recently (1996), largely due to the phylogenetic research conducted by Carl Woese and his team, it was decided that it would be useful to add an 8<sup>th</sup> level of classification to the traditional naming system in which all life could be divided into one of three domains. Each domain represents a fundamentally different type of cell.

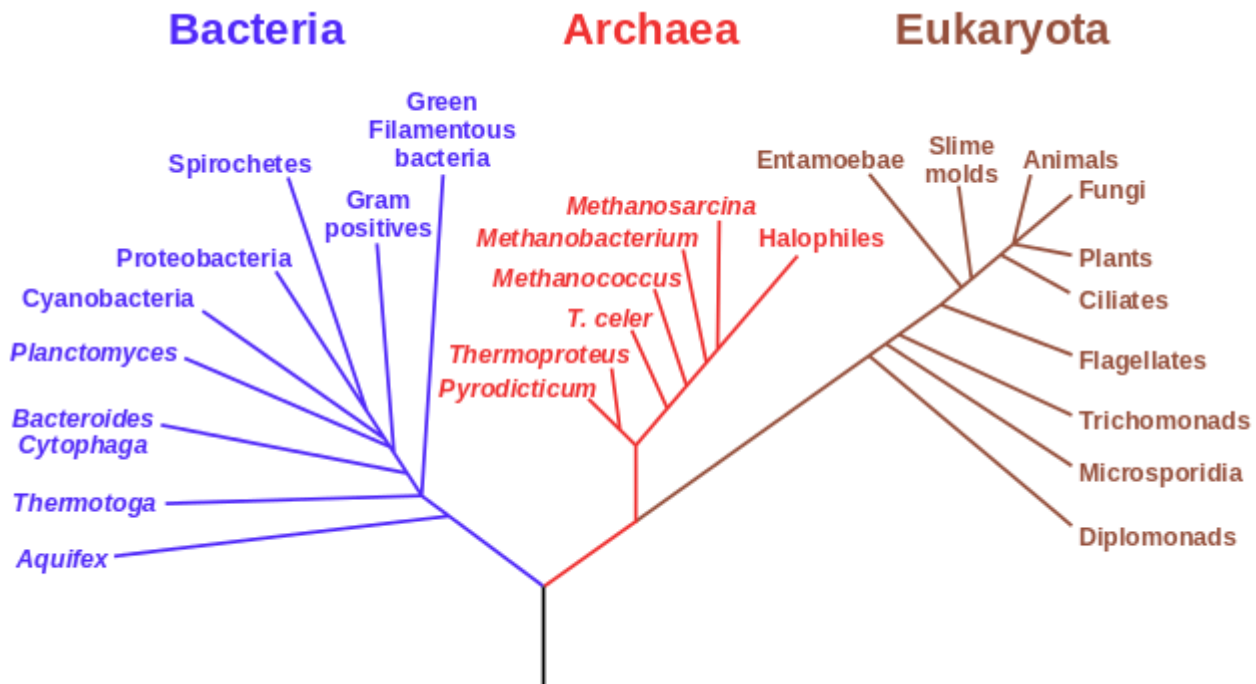
### Prokaryotic Cell



### Eukaryotic Cell



### Domains of Life



On a separate page, create a summary table of the six Kingdoms of life modelled after table 1 on page 27  
 Then do pg 29 # 2-5